
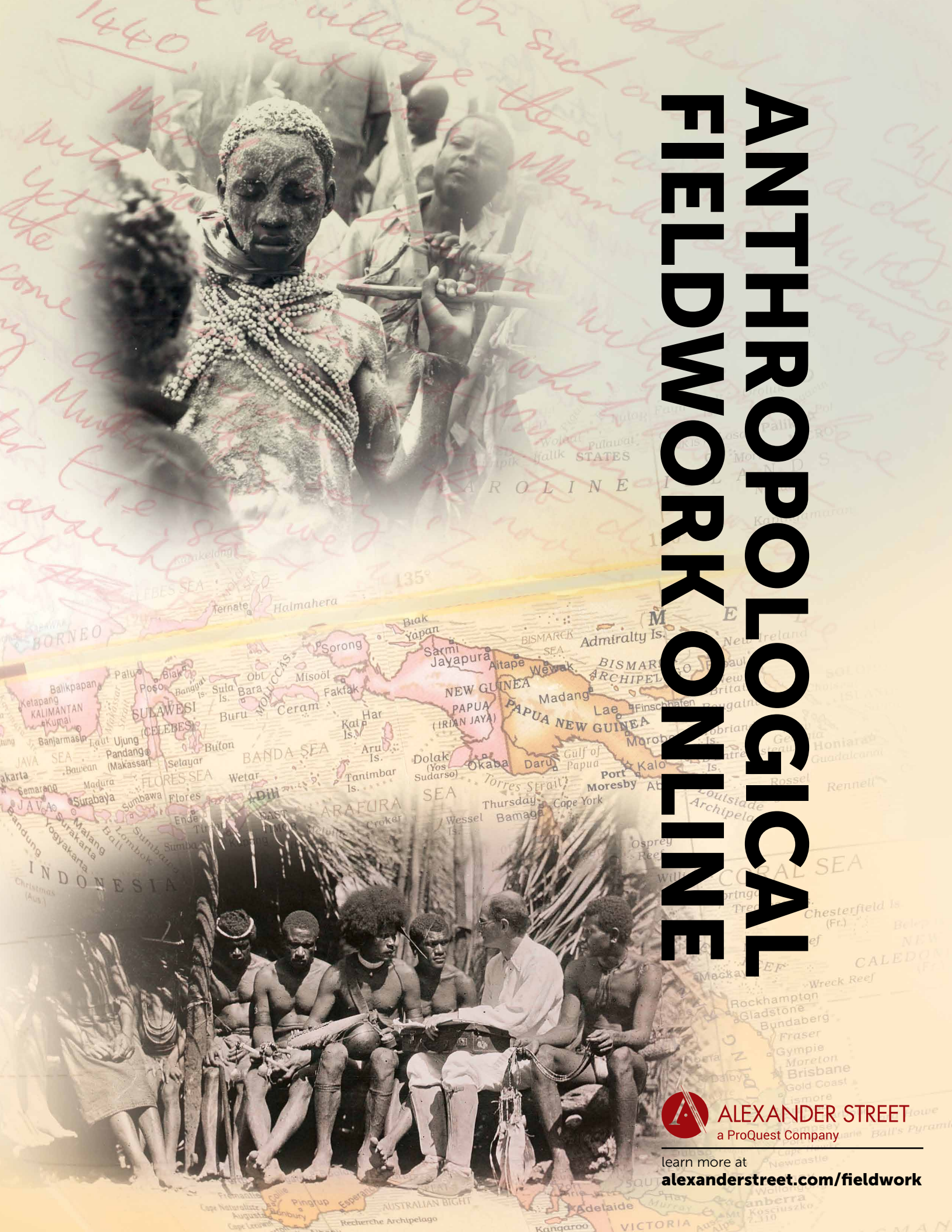
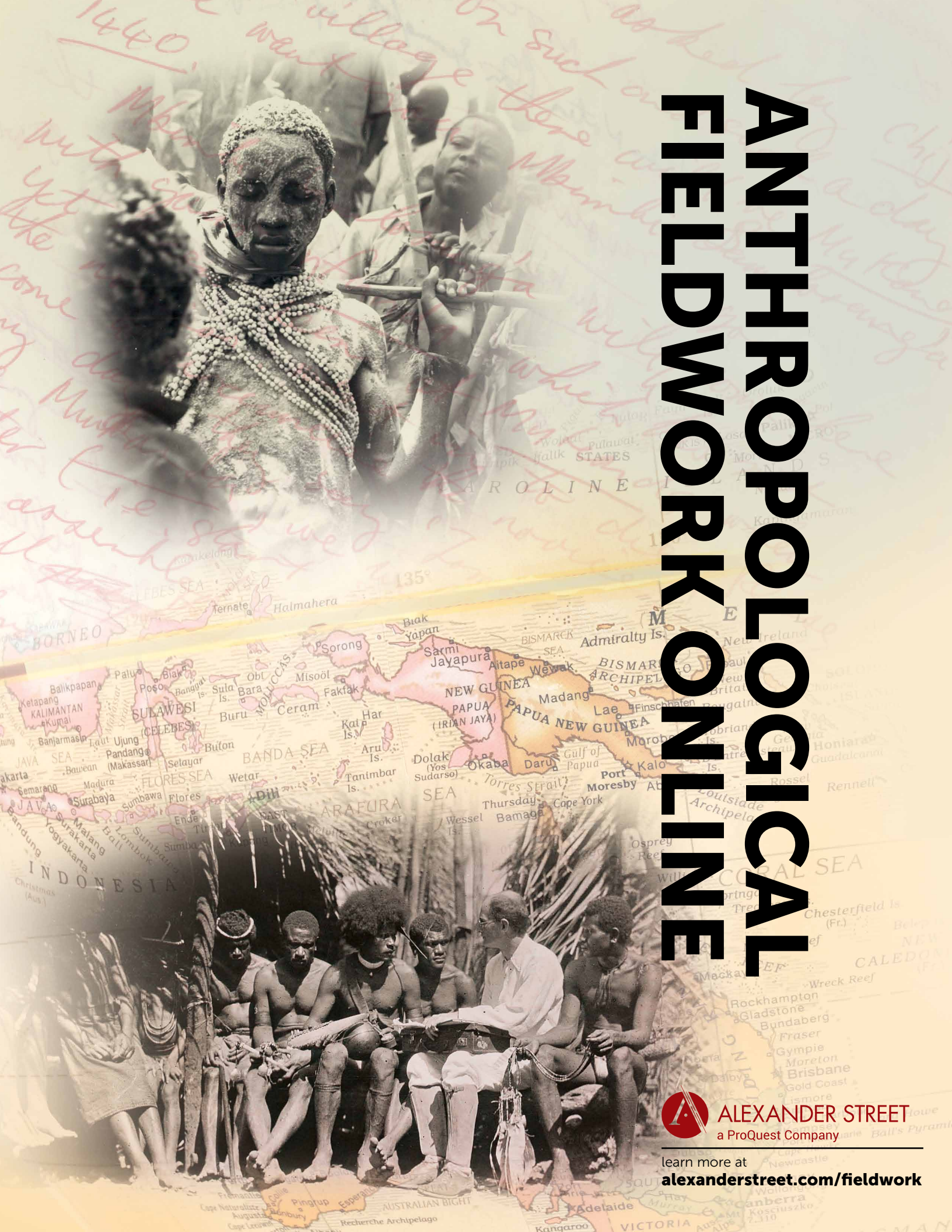



# ANTHROPOLOGICAL FIELDWORK ONLINE

 **ALEXANDER STREET**  
a ProQuest Company

learn more at  
[alexanderstreet.com/fieldwork](http://alexanderstreet.com/fieldwork)




# ANTHROPOLOGICAL FIELDWORK ONLINE

 **ALEXANDER STREET**  
a ProQuest Company

learn more at  
[alexanderstreet.com/fieldwork](http://alexanderstreet.com/fieldwork)

# ANTHROPOLOGICAL FIELDWORK ONLINE

 **ALEXANDER STREET**  
a ProQuest Company

learn more at  
[alexanderstreet.com/fieldwork](http://alexanderstreet.com/fieldwork)



## *Anthropological Fieldwork Online* brings the fieldwork underpinning the great ethnographies of the early 20th century into the digital world.

This fully indexed, primary-source database unfolds the historical development of anthropology from a global perspective—with archival collections from North America, Europe, and Asia Pacific — including key field notebooks, images, and recordings of the early- to mid-20th century.

The collection brings together the work of early scholars who shaped the theories and methods students learn about, critique, and reshape in their own fieldwork endeavors today.

Content is focused around each scholar's prominent expedition field experience, with comprehensive inclusion of fieldwork, contextualizing documents from the same time period, including correspondence, and subsequent writings that led to major publications, such as draft manuscripts, lectures, and articles. Users will see the full qualitative scholarly process unfold in all of its iterations, from data gathering in the field to later analysis, early writings, and final publication.

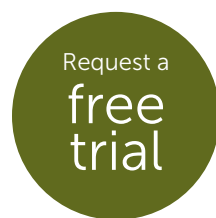
Archival curation is approached as comprehensively as possible, with

inclusion of full boxes, full folders, and full series. The Alexander Street platform enables users to mimic a live archive research experience in a digital space. Content and metadata are presented in original finding aid order, with box, folder, and document organization maintained in digital form. In rare cases of missing documents, dummy records and metadata will point researchers to the original source.

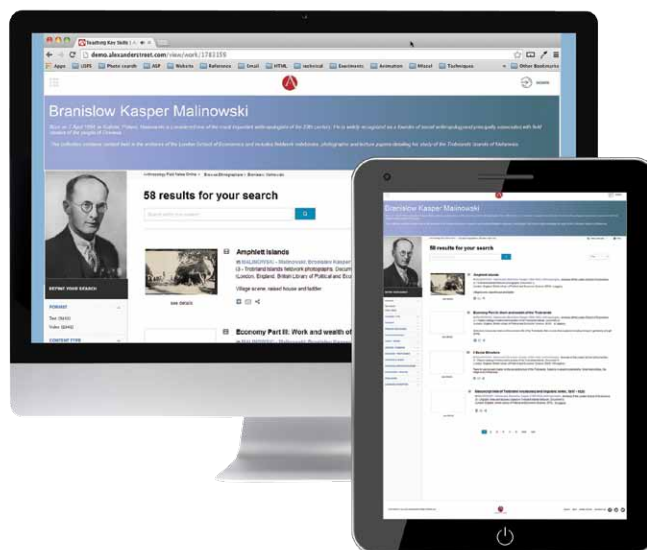
The collection will feature the previously unpublished fieldwork of anthropology's most influential scholars, including Bronislaw Malinowski, Ruth Benedict, Max Gluckman, Victor Turner, and Raymond Firth, among others. Content is being digitized in partnership with archival holding institutions such as the London School of Economics, Vassar College, Yale University, and the Royal Anthropological Institute.

With *Anthropological Fieldwork Online*, users can:

- Connect seminal scholars' unpublished primary-source research with their published ethnographies.
- Cross-search the scholars' contemporaneous research and writings in new ways.
- Illustrate the full scholarly process in all of its stages, from qualitative data gathering and analysis through publication.
- Access works that hold high value for cultural heritage and language preservation and documentation.
- Integrate primary sources into courses, enabling students to better understand, analyze, connect, and critique ethnographic research in historic context.



[alexanderstreet.com/fieldwork](http://alexanderstreet.com/fieldwork)





## Archival Collections

## Bronislaw Kasper Malinowski Papers



Best known for his research in the Trobriand Islands of Papua New Guinea, Malinowski went into the field for the first time in 1914, returning for multi-month trips over the next four years. In 1922, he published his seminal ethnography, *Argonauts of the Western Pacific*, based on this research. The study was one of the first to examine the Kula Ring, generalized exchange and gift economies. One of the founders of modern-day anthropology, Malinowski advanced participant-observer methodologies, as well as theoretical contributions, to functionalism.

*The Bronislaw Malinowski Papers* (held at the London School of Economics and Yale): The collection will

include over 12,000 pages of field notebooks, journals, early manuscript drafts, and correspondence from his research in the Trobriand Islands, 1915-1918, as well as notes and drafts leading up to the publication of *Argonauts of the Western Pacific* in 1922.

"I am delighted that Alexander Street is digitizing Malinowski's field work material. As a researcher myself in political science, I know how important it is to have access in digital form to resources previously only available in often distant libraries. I am sure that scholars around the world will welcome this project."

PATRICK BURKE,  
LECTURER IN POLITICS AND INTERNATIONAL  
RELATIONS, UNIVERSITY OF WESTMINSTER.  
GRANDSON OF BRONISLAW MALINOWSKI

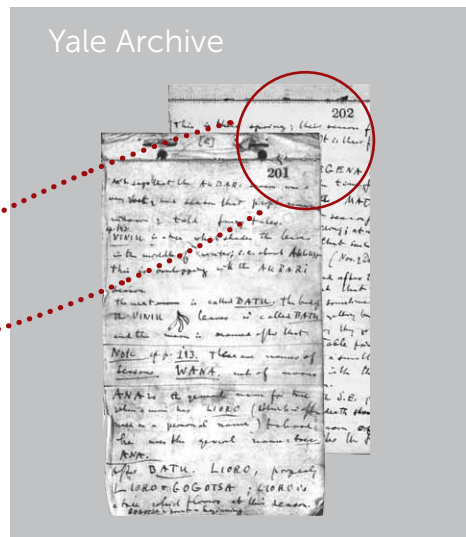
USE CASE
----------

## Connecting papers split between archives

While most of Małinowski's field notebooks from his expedition to the Trobriand Islands are held at the LSE archive, a small portion of them are held at the Yale archive – most notably, the first six notebooks from the fieldwork expedition.

Both sets of notebooks will be included in the collection, filling in "dummy record" gaps in the LSE finding aid.

The screenshot shows the LSE Library Services website. The top navigation bar includes 'Home' and 'Record' links. The main content area displays the record for '1915'. The text on the page reads: 'Original record. Original notebook is at Yale University and is numbered pages 201-300. Microfilm copy and handlist of the Malinowski papers at Yale University is available in C'. A red circle is drawn around the text 'is available in C'. Below this, there is a section for 'Closed; for further information on closed files see' followed by a URL: 'http://www.lse.ac.uk/library/usingTheLibrary/accessingMaterials/readingRoomAccess/fr'. The bottom of the page features a sidebar with links: 'About the catalogue', 'How do I search the database?', and 'Glossary'. The main content area also has a table with columns 'Access Status' and 'Extent', showing 'Closed; for further information on closed files see' and '1 file' respectively.





## Victor Witter Turner Papers



Victor and Edith Turner's fieldwork with the Ndembu in the former Northern Rhodesia led to his ethnography, *Schism and Continuity in an African Society: A Study of a Ndembu Village Life*, and to later theoretical works such as *The Ritual Process: Structure and Anti-Structure* and *Dramas, Fields and Metaphors: Symbolic Action in Human Society*. His fieldwork was instrumental in shaping later theoretical work on symbols, rites of passage, and ritual, which gave rise to concepts such as liminality, a state of being "in between" through which individuals pass at transitional periods of life, often bounded by rituals or rites of passage.

*The Victor Turner Papers* (privately held): The collection includes over 5,000 pages of field notes, field photos, and early draft manuscripts from the Turners' research in former Northern Rhodesia with the Ndembu between 1950 and 1954, as well as lectures, articles, and draft manuscripts that subsequently followed.

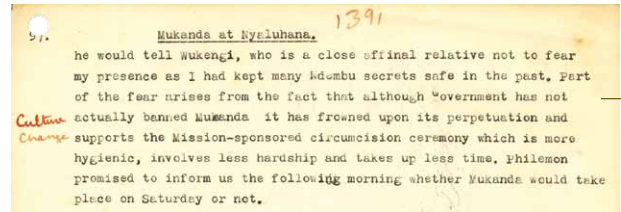
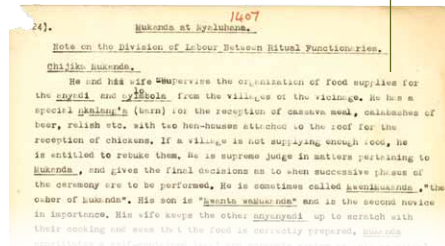
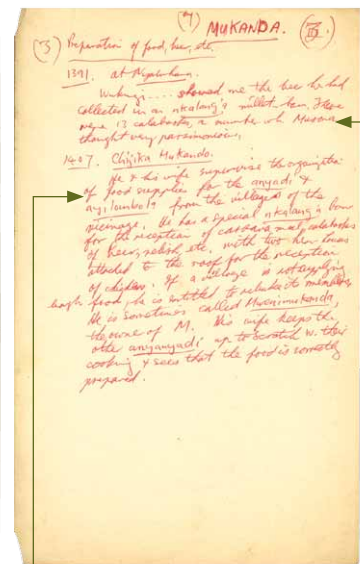
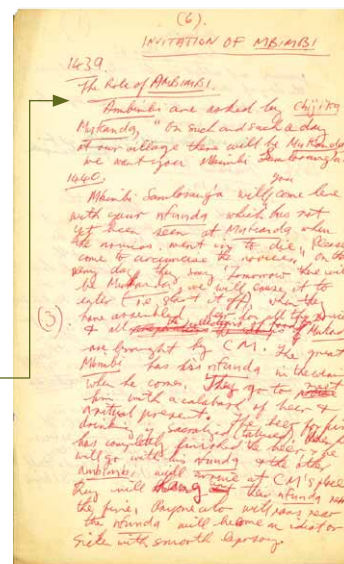
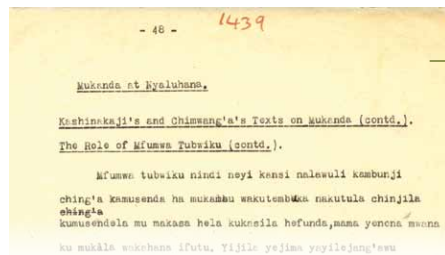
"I am so proud of the work of my father and mother in these collections. These materials reveal the craft of ethnography in its depth, care, and value, and will provide material for reflection and inquiry for scholars, students, and community members for years to come."

RORY TURNER, PROFESSOR OF SOCIOLOGY AND ANTHROPOLOGY, GOUCHER COLLEGE, SON OF VICTOR AND EDITH TURNER

### USE CASE

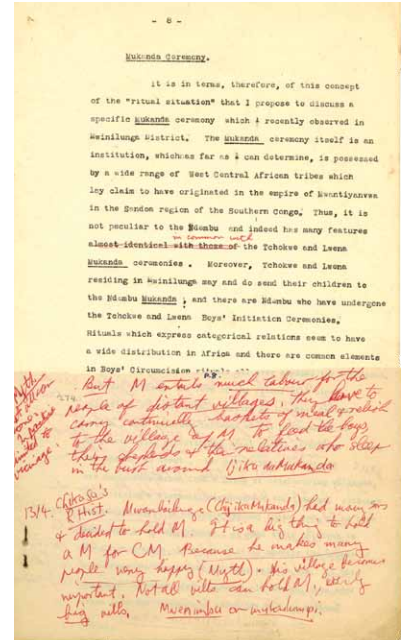
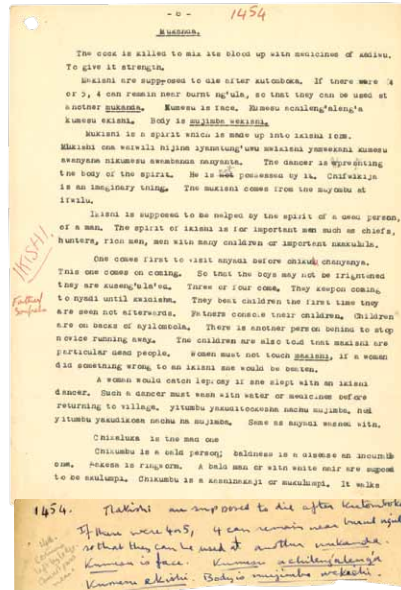
## Reconstruct events via field notes for theoretical analysis

In his analysis of the Mukanda, a boys' initiation ceremony among the Ndembu, students can see how Victor Turner pieced his field notes together to recreate chronological events and to analyze the temporal structure of events and its subsequent meaning.

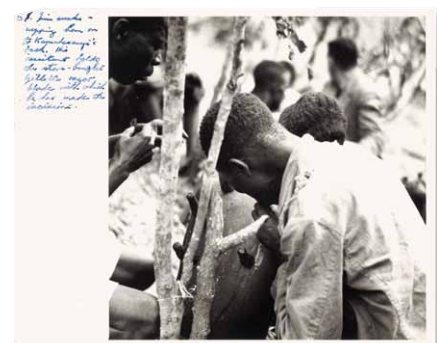
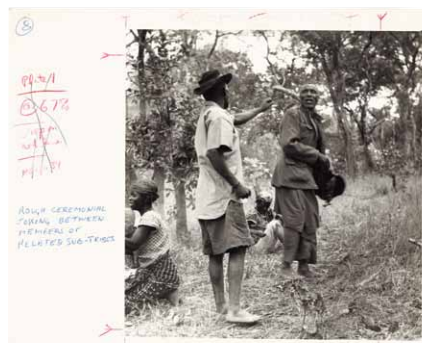
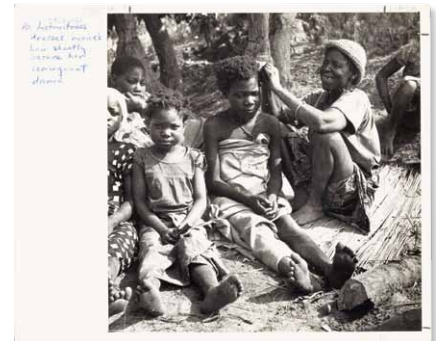
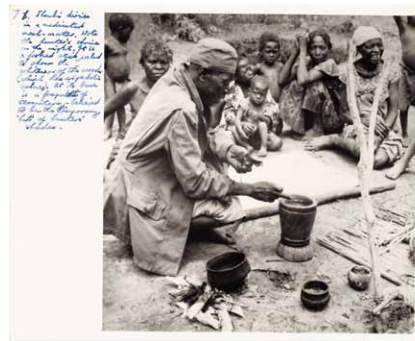


## Track references to field notes in draft manuscripts

Victor Turner copied and pasted his field notes into his later draft manuscripts of articles and book chapters, opening windows onto the full, iterative scholarly process, from fieldwork to publication.



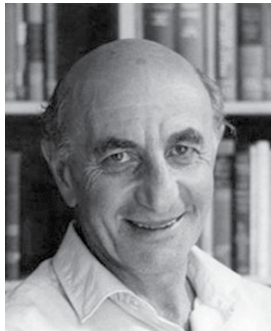
Following the examples set by Margaret Mead, Gregory Bateson, and others, anthropologists often turn to cameras and recorders as tools for documenting and analyzing the complexities, interrelationships, and nuance of culture and performance. Victor Turner and others used photography as part of the field process to document ritual and ceremony, using the photographs as field records alongside written notes.







## Max Gluckman Papers



Max Gluckman founded the Manchester School of Anthropology in the late 1940s, bringing a case-study approach unprecedented in qualitative research. He was one of the first scholars to bring conflict theory into elements of anthropological analysis, drawing from broader Marxist theories and analyzing elements such as power differentials, inequality, class conflict, and ideology. He was also the director of the Rhodes Livingstone Institute, developing it into a major center of British anthropological research. Gluckman conducted his Ph. D. research and much of his later Rhodes Livingstone Institute research with the Lozi of Barotseland in modern-day Zambia.

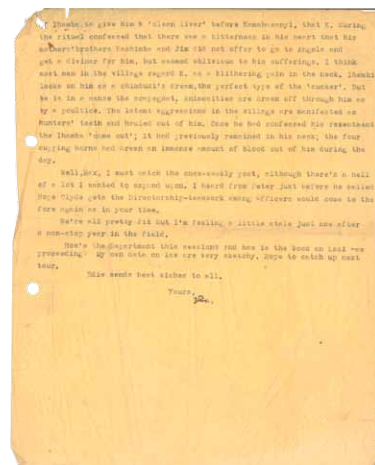
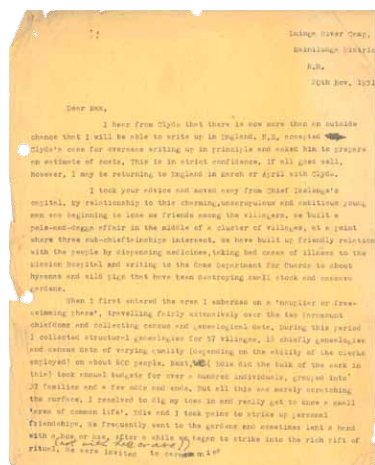
Barotseland in modern-day Zambia.

*The Max Gluckman Papers* (held at the Royal Anthropological Institute): The collection will include over 13,000 pages of field notebooks, journals, correspondence, research papers, and organizational documents from Gluckman's time with the Rhodes Livingstone Institute. The collection focuses on Gluckman's early fieldwork with the Zulu and later work with the Lozi, with a scope from the mid-1930s through the mid-1940s.

### USE CASE

## Read correspondence between anthropologists from the field

Correspondence written by a scholar during time in the field is important contextualizing information, as ethnographers often processed and began to analyze their data through correspondence — the first steps in the process of distilling ethnographic observation into broader social and cultural theory. The collection includes correspondence between: Victor Turner and Max Gluckman; Ruth Benedict and Franz Boas; and Bronislaw Malinowski and Charles Seligman.



## Sir Raymond William Firth Papers



Renowned as an economic anthropologist, Raymond Firth's lifelong fieldwork with the Tikopia, beginning in 1928, led to the classic ethnography *We the Tikopia: A Sociological Study of Primitive*

*Polynesia*. His later work with the Malaya in the late 1930s, conducted in partnership with his wife Rosemary Firth, formed the foundation for a number of ethnographic and theoretical works integrating economic and social systems.

*The Raymond Firth Papers* (held at the London School of Economics): The collection will include approximately 20,000 pages of field notebooks, journals and early draft manuscripts from Firth's research in Tikopia and Malaya, late 1930s through the 1950s, including follow up research visits.

## Ruth Fulton Benedict Papers

Ruth Benedict made significant contributions to the field in her exploration and examination of the role of individuals in relation to larger societies and cultures, and her integration of analysis of personality and individual agency in cultural description. She published her major work, *Patterns of Culture*, in 1934, a comparative work that integrated her own work and others.

*The Ruth Benedict Papers* (held at the Vassar College Archive, to be open access): Approximately 8,000 pages from the Benedict archive will be made open access and include notes from various field expeditions, including trips with the Pima, Serrano, and Zuni throughout the 1930s.

# REDEFINING THE ARCHIVAL RESEARCH EXPERIENCE, DIGITALLY

**Bronislaw Kasper Malinowski**

Born on 7 April 1884, in Kraków, Poland, Malinowski is considered one of the most important anthropologists of the 20th century. He is widely recognized as a founder of social anthropology and principally associated with field studies of the people of Oceania.

This collection contains content held in the archives of the London School of Economics and includes fieldwork notebooks, photographs and lecture papers detailing his study of the Trobriand Islands of Melanesia.

Anthropology Field Notes Online • Browse Ethnographers • Bronislaw Malinowski

Select Language | Help

**58 results for your search**

Search within this content

**Amphlett Islands**

in MALINOWSKI - Malinowski: Bronislaw Kasper (1884-1942); anthropologist. Archives of the London School of Economics. (3 - Trobriand Islands fieldwork photographs, Document 1). (London, England, British Library of Political and Economic Science, 2010). 1 page(s)

Village scene, raised house and ladder.

see details

REFINE YOUR SEARCH

FORMAT

Text (3410)

The Alexander Street platform enables users to mimic a live archive research experience in a digital space. Content and metadata are presented in original finding aid order, with box, folder, and document organization maintained in digital form.

Human Rights Studies Online • View work

0 items selected | Help

**Mwihlunga District Dates, 21 June 1951**

In Papers of Victor Walter Turner. (Phototypes made by Victor and Edith Turner on a research trip among the Ndembu, Mwihlunga District, northern Rhodesia, 1950-1951. # 1-6 Mwihlunga District Dates, lands and Ndembu history and traditions, Document 5). (Charlottesville, VA, Courtesy of Edith Turner. 2015). 2 page(s)

File | Email | Share | Playlist | Embed Link | Select item

Page 1 of 1 | Search inside

**Details**

**Abstract / Summary:**  
Extracts from a brief history of the District, compiled F. V. Bruce Miller, in November 1918.

**Archive:**  
Courtesy of Edith Turner

**Archival Collection:**  
The Papers of Victor Walter Turner

**Archive URL:**  
<http://www.digitallibrary.org/assets/Docum...>  
0646-F.pdf

**Field Of Interest:**  
Anthropology

**Subject:**  
Social Anthropology; Cultural Anthropology; Oceania; Tribe; Rhodesia; Fieldwork; Lorem ipsum dolor sit amet, consectetur adipiscing elit, sed do eiusmod tempor incididunt ut labore et dolore magna aliqua. Ut enim ad minim veniam, quis nostrud exercitation ullamco laboris nisi ut aliquip ex ea commodo consequat.

**Related Items**  
Annotations/Clips

## ADVISORY BOARD

**Alan Howard**, Professor Emeritus,  
University of Hawai'i

**Erik Bahre**, University of Leiden

**Frank Salamone**, Professor Emeritus,  
Iona College

**Jan Rensel**, University of Hawai'i

**Mary McCutcheon**, George Mason  
University

**Rory Turner**, Goucher College

Additional Support From

**Mary Catherine Bateson**, Professor  
Emerita, George Mason University

Discussions are currently underway for possible inclusion of additional archival collections, including the papers of Margaret Mead, Alfred Kroeber, Claude Levi-Strauss, Marvin Harris, Frank Hamilton Cushing, Edmund Leach, Reo Fortune, A.M. Hocart, and Norman Tindale.

*Anthropological Fieldwork Online* is a contributing collection, which means that 10% of the revenues from all new purchases will go toward our anthropology open access archival publishing initiatives.

---

Anthropological Fieldwork Online

Teaching Anthropology Online

Ethnographic Video Online: Volume III,  
Indigenous Voices

Ethnographic Video Online: Volumes I and II

Smithsonian Global Sound® for Libraries

Early Encounters in North America

North American Indian  
Thought and Culture

Anthropology Online



ALEXANDER  
STREET  
a ProQuest Company

learn more at

**[alexanderstreet.com/fieldwork](http://alexanderstreet.com/fieldwork)**