

# ETHNOGRAPHIC VIDEO ONLINE, ROYAL ANTHROPOLOGICAL INSTITUTE TEACHING EDITION

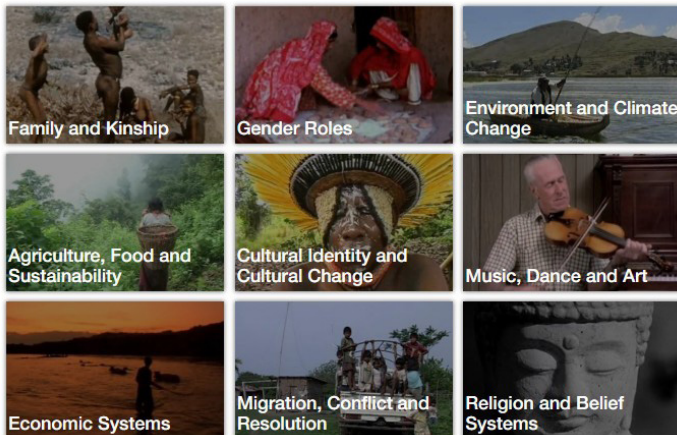
A curriculum-aligned collection of videos and segments curated to support the teaching of introductory anthropology courses.



*ALL teaching materials are created by the Education Committee of the Royal Anthropological Institute*

## EACH VIDEO AND SEGMENT CONTAIN:

- Teaching guides
- Classroom exercises and activities
- Related text suggestions
- Bibliographies
- Lesson plan ideas
- Summary and background information



**Clip 2** 15:25 – 19:55 **Performing Gender**

**SYNOPSIS**  
Ho'Onani performs a (traditionally male) gender role as part of a traditional Hawaiian chant and dance. Hina talks about what it means to have kū (male energy).

**CHARACTERS:**  
**Hina (Hina Wong-Kalu)** a native Hawaiian māhū 5<sup>th</sup> teacher  
**Ho'Onani (Ho'Onani Kamali)** a young māhū in Hina's class

**MAIN THEME**  
Sex and Gender

**OTHER THEMES**  
The Body (Performance)

**GOOD TO KNOW**  
Students will need to know a little about māhū, which is covered succinctly in the first 15 minutes to 01:09:48 of the film, in which Hina explains the role of māhū in Hawaiian culture.

**LESSON PURPOSE**  
Students will consider the difference between māhū and transgender.

**LESSON OBJECTIVES**

- Students must reflect upon their own gender identity.
- Students should consider how gender roles are performed in their own cultures.

**SUGGESTED EXERCISES**  
You have been invited to speak on a radio podcast. You have 60 seconds to define māhū and discuss whether māhū is a type sex or gender. Plan and record your audio clip.  
Teacher: see Key Terminology (page 2). If necessary, ask students to look up different dictionary definitions of key terms and discuss these, then agree on definitions for the class to use in this lesson. Encourage students to think about what, where, who, why and how. Extra guidance may be needed due to the potentially sensitive nature of the topic.

**SUGGESTED DISCUSSIONS**  
Quote: Ho'Onani "See, when you first look at me, oh, yeah, oh, yeah, are you a boy? I'm like, "Umm... No". And then they give me a look, but it's all a natural thing. Kumu (Hina) is in the middle too. Everybody knows that, and it's not a secret to everybody. What middle means is, a rare person."  
• What might Ho'Onani mean by "in the middle"?  
• Why do you think British missionaries in the 1800s had a problem with the māhū?  
• Teacher prompt: what categories of gender were the British used to back in Britain? What were their aims in going to Hawaii?

**Kumu Hina**  
Directed by Joe Wilson, fl. 2009-

## GET MORE DETAILS OR A FREE TRIAL:

<https://alexanderstreet.com/products/rai-teaching-edition>

Ask your ProQuest representative about complementary resources spanning subject areas for anthropology.